



Wellesley Park Primary School

Headteacher: Carly Wilkins
Wellesley Park Primary School
Homefield, Wellington
Somerset, TA21 9AJ

21st July 2023



Headteacher's Comment

I cannot quite believe that we are at the end of another school year. It only felt like yesterday that I returned from maternity leave, on those dark, cold winter mornings! I would like to offer our collective thanks for the support you have given to your children, our staff and school, this academic year.

I would like to give our very best wishes to the Year 6 cohort and their families. It has been a pleasure to see them grow up to become such fine learners. The school owe them a debt of gratitude and they will be sorely missed both individually and collectively – we wish them lots of happiness in their very bright futures!



As we look to the next academic year, I offer a warm welcome to all the new children starting at Wellesley Park and their families.

Our Strawberry Evening was a huge success. It was such a lovely atmosphere and it was so brilliant to be able to come together for a celebration of Wellesley Park. It was wonderful to see so many families (old and new!) Again, I would like to say a special thank you to all of the parents and staff who made this possible - from the collecting of the strawberries, to the hulling session, setting everything out, and of course the fantastic BBQ! It was everybody working together that made this evening so special.



We do of course say a final goodbye to a few amazing staff leaving this week. As you are already aware, Mrs White, Mr Hakes and Miss Bardle are moving onto pastures new at the end of term - all have made a substantial contribution to the school. Mrs Sheehan, our Pastoral Lead, will be leaving us at the end of term for a promotion to work for the 'Family Intervention Service'. We are pleased to be welcoming Jackie Bagnell as our new Pastoral Co-ordinator, who already has a vast experience of working to support children and their families in other settings. Miss Shire is leaving to commence teacher training in September – this is a fantastic opportunity for Miss Shire and I know that she will 'smash it'! Please come back as a teacher, once you are qualified! Goodbyes are never easy but our investment in staff and their careers will always mean they may (and do!) leave to take up other opportunities. We wish all of our leavers (staff and pupils) a very happy and successful future.

Huge congratulations to Miss Hill (Class Teacher), who has said that she is very happy for me to share the wonderful news that she and her partner are expecting their first child! Miss Thompson-Burrows, has also just shared the same exciting news with me, and I am sure that you will all join me in congratulating them both on such an exciting event for their families.



Mrs Pilling and Mrs Murphy would like to let all parents know that they are all doing well, following the birth of their baby boys. Mrs Pilling popped in to see us all recently, with her son, Albie who smiled the whole time! Mrs Murphy also came to visit us in school with her son, Bodhi, who also was a very happy and content little boy! I know that you will join us in wishing them both the warmest of congratulations!



It just leaves me to wish you a very restful and enjoyable summer – fingers crossed for lots of sunshine! Everyone at school will look forward to seeing you all again, after the INSET Days, on Wednesday 6th September 2023.

With best wishes, as always

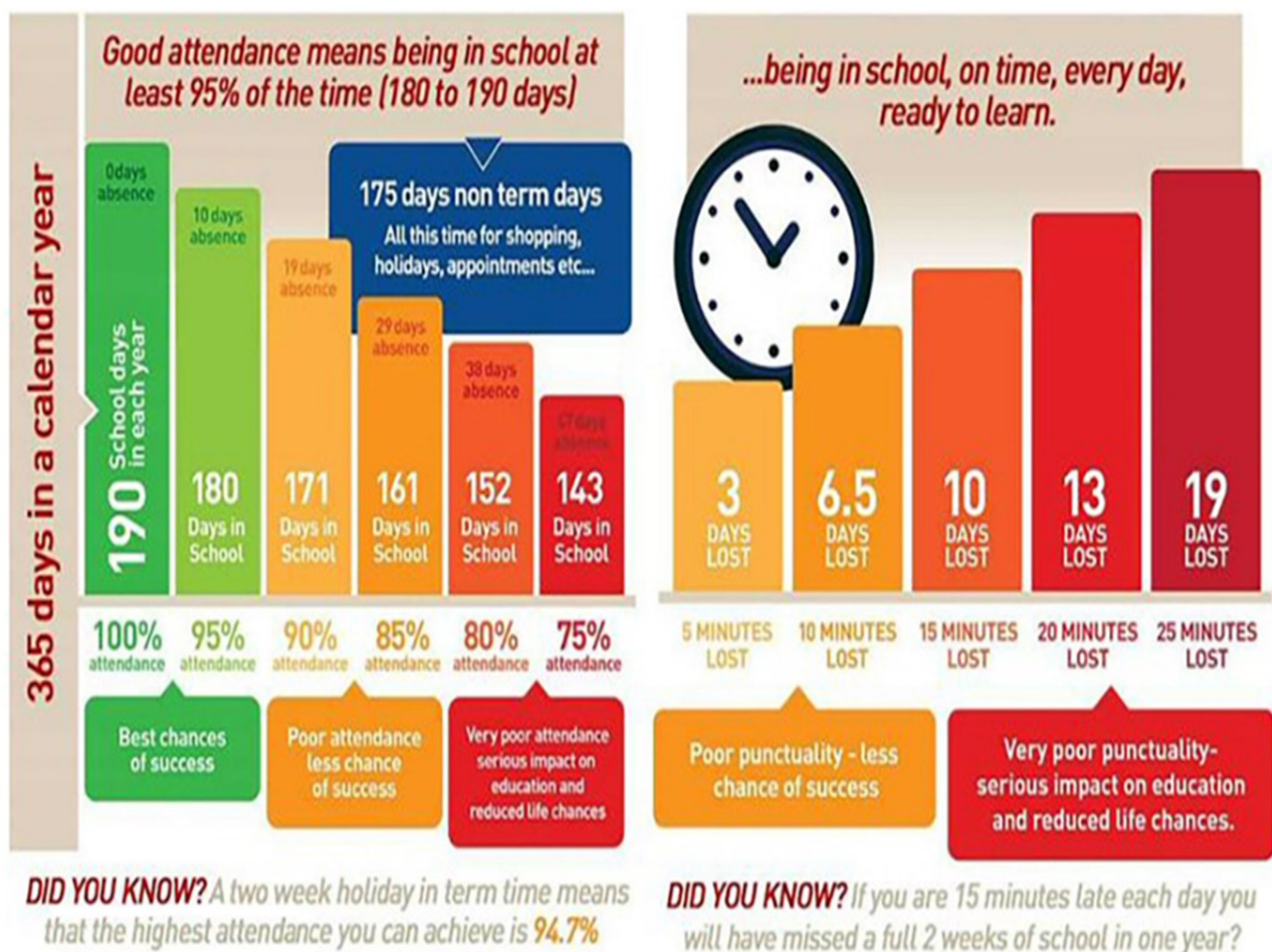
Mrs Wilkins

Attendance – Our School Expectations

Pupil attendance and punctuality is a key focus and priority within our school and will continue to be so next academic year. The DfE and the Secretary of State for Education have made a commitment to reduce pupil's absence, thus ensuring that improving attendance is a top priority for everyone. The DfE has produced updated guidance on working together to improve school attendance which can be found here: https://assets.publishing.service.gov.uk/government/uploads/system/uploads/attachment_data/file/1099677/Working_together_to_improve_school_attendance.pdf

Thinking ahead to the new academic year - the first few days back really matter... evidence from a recent Children's Commissioner report shows that children who miss days 2, 3 and 4 of the new academic year, for unauthorised reasons, had a predicted overall absence of almost 45%, or 31 days across the term.

Next year, we will be rigorously monitoring individual attendance on a bi-weekly basis. We would like to kindly remind parents that the school's expectations on individual pupil attendance is 96% and above, with the aim of having 100% pupil attendance. Should your child fall behind the school's expectations a monitoring process will be promptly triggered and we may ask you to come into school to discuss your child's attendance with us. Should you have any questions or concerns relating to your child's attendance please do not hesitate to contact us for advice and support.



Attendance - by class for this half-term

Gruffalo	95.95%	Matilda	97%	Galadriel	89.01%
Jasper	93.29%	BFG	96.94%	Thorin	96%
Mrs Tiggywinkle	94.42%	Hufflepuff	86.68%	Akela	93.75%
Peter Rabbit	95.40%	Gryffindor	96.11%	Bagheera	93.29%

Well done to Matilda class for achieving the highest attendance this half-term.

Dukes - Reminder

Please remember to book your sessions if you require breakfast or afterschool club sessions for Autumn 1. Bookings to be made through Magicbooking as soon as possible. All details can be found by following the link to our website:

www.wellesleyparkschool.co.uk/parents/wrap-around-care.htm

Many thanks.

Changes to School Session Times - Reminder

Please can we remind you that our school schedule for the start and the end of the school day will change from September 2023, as detailed in Mrs Wilkins' letter of 11th July. These times will apply to the whole school.

- Classroom doors will open at 8.30am
- School Registration will be at 8.40am
- School ends at 3.15pm

Breakfast Club will run from 7.30am to 8.30am.

Many thanks.

School Meals

The deadline for booking meals for the first week back after the Summer holidays has now passed. If you have not booked your child school meals for that week, please ensure they come to school with a packed lunch.



You are still able to book meals for the remaining weeks of Autumn 1 on ParentPay, right up to 19th October.

Many thanks.

Policy Updates

Please note following policies have been updated and can be found on our school website:

- Uniform Policy
- School Session Times Policy
- Fees & Finance Policy (Pre-School)
- PHSE - RSE Policy
- Attendance Policy
- School Security Policy



West Country School Music - Key Stage 2

Music lessons will recommence for the Autumn term on Thursday 14th September for KS2 children that are currently signed up for music tuition.

If you are interested in music lessons for your child, please see the West Country School Music information sheet at the end of the newsletter, or visit the website:

www.westcountrymusic.co.uk



Many thanks

Outdoor Learning & Forest School Provision 2023-24

Outdoor Learning 2023-24

Next academic year, we are very excited for the return of Outdoor Learning sessions for all children. This will be provided by Inspired Schools - the same brilliant company that provide our PE lessons.

These sessions will take place each Wednesday and in order for every class to have this amazing opportunity, the following schedule will be in place:



Wednesday afternoons - Autumn 1 - Years 2 and 3

Near the end of this half-term, we will update parents as to which Year Group/s are going next.

Forest School Provision 2023-24

For children who have Forest School provision as a statutory provision on their EHCP (and are not receiving this through alternative providers), their Forest School sessions will also be on a Wednesday.

For some of our other children - from the main SEND register (needs dependent) - opportunities will be provided across the year in half-term blocks, but not as a continuous 'whole year' provision. We will be timetabling this over the holidays and will let you know who will be involved for the first half-term block, during the first week back in September.

For both Outdoor Learning and Forest School provisions - neither will be happening during the first, 3-day week, back in September. **All will start from week 2.**

Somerset Household Support Fund

The Household Support Fund is designed to provide short-term urgent financial help to Somerset residents who are struggling to afford household essentials such as buying food and paying for prepayment meter energy bills.

You can get help regardless of your work situation, provided you show that you are struggling to pay for essentials. A Household Support Fund will not affect your benefits.

You can apply if you:

- Are temporarily out of work -Are unable to work due to illness
- Are long term unemployed and unable to retrain due to multiple reasons such as poor health
- Have a chronic illness -Have a severe learning or physical disability that affects your day-to-day life
- Are in receipt of pension credit -Currently use a mental health service, or a member of your household does
- Are a carer -Are pregnant
- Have a child that requires a specialist diet -Have a child with a chronic illness
- Have a child with a severe learning or physical disability that affects their day-to-day life
- Are or have been a child in care (Child looked after) -Are a care leaver
- Receive support from Somerset Council Children's Social Care
- Are fleeing domestic abuse
- Are homeless and have been placed in temporary accommodation -Are a refugee
- Are a foster carer, kinship carer or special guardian who cares for a Somerset child and can demonstrate a need for immediate or short-term support, which could not be reasonably paid for from any allowance you may receive
- Receive support from Somerset Council Adults Social Care
- You or your family currently have a Social Worker and are on a Child in Need Plan or on a Child Protection Plan

For more information and to apply, visit www.somerset.gov.uk/care-and-support-for-adults/somerset-household-support-fund/

SEND Summer Guidance

For parents of children with SEND, please find some links to Summer guidance and support that might be useful:

- Helping your child with SEND transition into (and out of) the summer holidays - www.twinkl.co.uk/news/helping-children-with-send-transition-into-and-out-of-summer-holidays
- Holidays with an SEN child | The Good Schools Guide - www.goodschoolsguide.co.uk/special-educational-needs/help-and-advice/holidays-with-an-sen-child
- Activities for families (somerset.gov.uk) - www.somerset.gov.uk/children-families-and-education/the-local-offer/leisure/activities-for-families/

Message from Sarah Vine, Wellesley Park PTA Chair

Wow, what an amazing year we have had! Since our new committee took over at the end of October last year we have worked really hard to reinstate some of the long held and cherished traditions of the PTA/School that have been so much missed during the COVID years, whilst also bringing in some new events that we hope you've loved as well.

This year we've managed to run:

- 3 discos
- Christmas card sales
- Carols and Cocoa
- Bingo
- 3 seasonal shops
- Colour Run
- Strawberry Evening
- A student fun day
- Break the Rules Day
- Cake sales
- Uniform shop

These have all been so well supported - thank you so much.

Highlights for us include the Carols and Cocoa night and the Colour Run - both of these were more popular than we'd ever imagined! Especially the Colour Run - that was just amazing and we're often asked by staff, parents and students if we can do that again! Fingers crossed.

Our spending has been a little conservative this year as we have been asked by the school to help transform the library and improve the books on offer. This is not a small project so we have a savings pot that is working towards that.

However, each class this year was offered £100 to enhance the learning and development of students and we have seen clear evidence of this through cinema trips, beach trips, theatre education visits and plenty of books/classroom resources being bought.

We have also donated towards the Pantomime visits and trips, organised the Coronation activities, donated towards the leavers party and organised a student fun day.

We hope everyone has enjoyed the events we've held and has benefitted from our spending.



Next year we are hoping to continue our fundraising and look forward to running similar events. We will be having different coordinators for each event so if you feel like you would like to run/organise a particular fundraising activity please contact us or come along to our next meeting/ coffee morning to have a chat. Come along even if you don't want to organise anything as we're always on the look out for new ideas and volunteers to help. We cannot run events without volunteers so we appreciate any time you can give.

On that note we'd also love to support the school in being part of Wellington Carnival this year, so if you have any ideas, can volunteer some time or even have a suitable float vehicle then please contact us - we'd love to hear from you!

As we finish off this academic year all of us on the PTA would like to thank every single parent, member of staff, business and any other individual contributors who have supported us. We hope to see you all again in September.

Pre-School - Wellesley Park Explorers

This term we have been learning about 'being healthy'. The children have enjoyed lots of fruit tasting and incorporating activities into their play which demonstrated sorting foods into healthy and unhealthy categories. From this the children have understood why it is important to eat a healthy balanced diet and how unhealthy foods are okay but in smaller portions.



The children enjoyed participating in lots of races for Sports Day week and also learnt the importance of exercise through various activities.

For the last week of term, the children have had a 'free choice' week where they have autonomy over their learning and have been given the choice of what they would like to play with/do. They have enjoyed choosing their resources and many learning opportunities are being had by our little explorers.

We are saying goodbye to children who are leaving to start Primary School and we have enjoyed a little party to celebrate the end of the year.

We hope you have a lovely Summer and we can't wait to welcome you back in September with our topic 'All about me'.



Reception / Year 1

Wow! We can't believe we have come to the end of an amazing year. Think back to September... a long time ago now! The Reception children just about to start their academic journey, and the Year 1s ready to be role models and show them the ropes. Oh how we have learnt, laughed and changed since then!

I could go on and on about how fantastic this year has been, but the children are the real stars of the show and I thought it would be much better to hear from them! So here are some of their thoughts:

"We've loved playing outside!"

"We've been kind to people, met and made lots of new friends!"

"We've learnt phonics to help us read."

"Our favourite part of the school trip was throwing stones in the water!"

"We had fun planting petunias!"

"PE lessons and sports day was awesome!"

"The colour run was funny because we all get covered in paint – Miss Bardle and the Headteacher too!"

I think you can all agree a fabulous round up to a great year. Thank you all for your support, I am going to miss you terribly, but know that you are all going on to great things!

All the best for next year.

Miss Bardle



Year 1/2

What a year! We have had so much fun getting to know the Year 1 and 2 children and sharing in so many experiences together. This term in particular, we have enjoyed so many learning opportunities and memorable moments.

A firm favourite has to be our Reception/Year1/Year2 trip to Minehead. We loved every moment from the coach journey to the steam train to the beach. Another highlight this term has to be our KS1 Sports Day and the PTA Colour Run - the smiles on the children's faces said it all!

In the classroom, we have enjoyed practicing our Chinese writing, creating a 'double page spread' on seasonal change, reading Mr Majeikaja and developing our writing skills. This week, we encouraged all children to look back at their first ever piece of writing from this year and compare it to their work now. It was wonderful for them to realise for themselves the incredible progress they have made!

On behalf of all of the KS1 team, I would like to wish you all a safe, happy and fun-filled summer break. We have had the most wonderful year and I wish you all the best for the future.

Mrs White



Year 3

We cannot believe we are writing the final newsletter for this academic year. We have had such a fantastic time in Year 3 and it has been amazing to see all the children grow. We have thoroughly enjoyed the time we have spent together and all the fantastic topics we have covered over the year.

The children enjoyed taking part in their first KS2 Sports Day this term. From participating in the running races, javelin, long jump and triple jump and supporting their class mates. We went on our School trip to the cinema to watch Mummies which the children thoroughly enjoyed and were all so well behaved when representing Wellesley Park School. They should all be really proud of themselves. Then the fun day where the children all had ice creams and played on the bouncy castles! We all had so much fun!

Thank you for all your support over this year! The children have all shown great resilience and have worked amazingly hard in school and have made fantastic progress. We wish you all the best for Year 4.

We wish Miss Sweetland all the best in her new adventures. The children have all loved having you as their teacher and you will be truly missed.



Year 4

What a fantastic end to the academic year our amazing Year 4 classes have had. The children have really impressed us with their recent resilience and determination shown in the Summer assessments. They should all be very proud of themselves.

In English, the children have produced some amazing independent Non-Chronological Reports on a subject of their choice. There was such a variety for us to read from football, turtles and rabbits to dragons and the Jurassic World franchise!

In Maths, having completed the Year 4 curriculum and consolidated our learning, the children have been enjoying some Maths Mysteries and challenges this week which have really stretched their understanding.

In Guided Reading, we have come to the end of our class novel 'Who Let The Gods Out' by Maz Evans. The antics of Elliot, Virgo and the gods have thoroughly entertained us all! Don't be surprised if there are requests for the sequel over the summer!

All that's left to say is a huge thank you for your support over the year. We hope you have a fantastic summer and wish all our Year 4s success in Year 5.



Year 5

WOW! We can't believe it is already the end of Year 5. It has gone so quickly, and what an amazing year it has been. We are all so proud of you, and your learning.

This half-term has been jam packed, full of exciting things. In English, we began our defeat the monster stories, which we are sure, we have read some of the best stories yet! You all had us on the edge of our seats.

In Guided Reading, we predominantly focused on non-fiction, where we learnt about the different layouts of these types texts and learnt some fantastic facts.

Not forgetting, our amazing Sports Day, Colour Run, Cricket and our morning at Court Fields, where we created our final products of the bird boxes which we have been designing this half term.

We used the 3D printer to cut out our own logos, whilst another group used tools to cut out our unique shapes for the bird box.

Team Year 5 are all so proud of you, and we wish you all the best in Year 6.



Year 6

Our final term in Year 6 has flown by! Our biggest project of the term has been preparing and performing our end of term show, 'I'm an 11-Year-Old Get Me Out of Here!' The children have made us all extremely proud by learning their lines, perfecting the songs and giving stellar performances in front of the whole school and over 100 parents, carers and families.

Earlier in the term, Year 6 took part in their final Sport's Day at Wellesley Park and led the rest of the school in the PTA sponsored Colour Run.



We also had another sports field day when visiting Somerset County Cricket Ground to watch Somerset CC take on Hampshire. During both events, Year 6 represented the school extremely well and made great role models for the younger children.

This term has also focused on the transition from Year 6 to Year 7. All children visited their new secondary schools and told us they had a great time taking part in new lessons and meeting new friends.

We are all extremely proud of the whole of Year 6 for their hard work and determination this year and wish them all luck in Year 7!



West Country School Music

Information Sheet (September 2023)



Welcome to West Country School Music

West Country School Music provides instrumental music lessons in your school. Usually these are for children in Year 3 upwards and the instruments available to learn are listed below. Our teachers are selected for their instrument knowledge and suitability to work with primary school children. We aim to work with you and your school to increase the musical opportunities here.

Please see our website (address at the bottom of this page) for much more information about our lessons and the general benefits of learning to play an instrument.

We look forward to helping your child begin learning to play a musical instrument and create their own music.

Why learn to play an instrument?

Learning to play a musical instrument stimulates and helps co-ordinate thinking and physical action and, of course, is great fun and very satisfying. Playing also develops confidence, concentration and team skills.

There is increasing evidence to show that the brain functions needed for maths and literacy are enhanced by learning to play a musical instrument and that the beneficial effects of this are greater the longer a child learns for. Learning to play a musical instrument is good for the brain in later life too!

West Country School Music
07740 117227
westcountryschoolmusic.co.uk
wscsm@btinternet.com

What instruments are available to learn here?

Our teachers teach Flute, Clarinet, Alto Saxophone, Cornet/Trumpet, Trombone, Guitar, Keyboard, Recorder. (Violin is also available in some schools). We will try to find the best instrument for your child, not our favourite. Many instruments are available in 'mini' versions to accommodate smaller learners.

Lessons

We have found that children make best progress if they are at least 7 years old when starting. Lessons are usually given during the school day as agreed with your Head Teacher.

Children receive individual attention within a small group (usually 2 or 3 pupils) for 20 minutes ten times a term (usually 5 lessons before half term and 5 after). Different instruments may be present in a group. Lessons include music theory, aural training, instrument care, group work and general music skills as well as instrument technique.

Progress is carefully monitored and is recorded in the tutor book. Formal exams are also available when your child attains key levels.

Covid-19

Please see our Risk Assessment on our website. We are working with schools and the latest government guidance to make music lessons Covid-safe.

Lesson price

£83 per term (10 lessons per term). 1:1 lessons are also sometimes available.

Instruments: Hire or buy?

We can help with hire or purchase of instruments. If you are not ready to buy an instrument we have most instruments available to hire. Please phone to ask if we have what you need. Hire fees are currently £30 per term (£18 per half term) for most full sized wind instruments and keyboard (£37 for Alto saxophone). The following holiday is included. Jflute, cclarinet, small trombones, violin and guitar are available at £18 per term.

We will also search for the best value student instruments for you to purchase, if required (wind, keyboard or guitar) so that you don't have to.

Music and consumables

The music and other items (e.g. Reeds etc.) your child needs, whether as a beginner or as they progress, are available to purchase from our office.

Any questions?

Please phone our office on 07740 117227 to ask any questions you may have, register your child for lessons or to purchase or hire an instrument. Office hours are 8 am to 6 pm, Monday to Friday.

† AIPS (Assisted Instrument Purchase Scheme) also available through most schools (parents pay no VAT on the instrument).